

VERTEBROPLASTY

BONE NEEDLES & SET



Vertebroplasty Injection System



Injection Gun + Connection tube

Kyphoplasty Standard Kit Single Access

| Order Code | Description |
|------------|---|
| 49000000 | Injection Gun + Connection tube |
| 49000001 | Injection Gun + Connection tube + Cement Shaker |
| 490000002 | Cement Shaker |

Quick, precise and safe cement injection by large screw plunger and consistent pressure.

Precise application through «screwing-in» the cement safely and controlled into the vertebral body.

Ergonomically shaped hadgrip for comfortable use during the procedure.
Luer-lock connecting tube.

Available with cement shaker kit.

Can be combined with all Adria needles: small ergonomic handle, ergonomic handle and standard handle.



Cement Shaker

Vertebroplasty Needle – Ergonomic Handle



| Ø Gauge | Length (cm) | Order Code Flute Tip | Order Code Trocar Tip |
|---------|-------------|----------------------|-----------------------|
| 9 | 10 | 49680 | 49880 |
| 9 | 12,5 | 49682 | 49882 |
| 9 | 15 | 49685 | 49885 |
| 11 | 10 | 49620 | 49820 |
| 11 | 12,5 | 49622 | 49822 |
| 11 | 15 | 49625 | 49825 |
| 13 | 10 | 49640 | 49840 |
| 13 | 12,5 | 49642 | 49842 |
| 13 | 15 | 49645 | 49845 |

Units per Box: 5

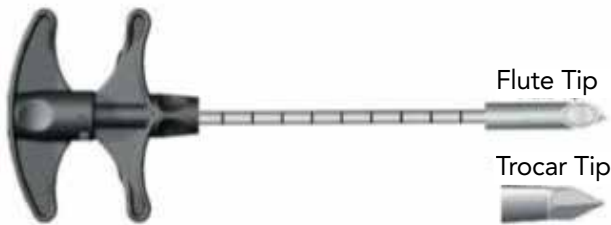
Vertebroplasty Needle – Small Ergonomic Handle



| Ø Gauge | Length (cm) | Order Code Flute Tip | Order Code Trocar Tip |
|---------|-------------|----------------------|-----------------------|
| 9 | 10 | 49090 | 49290 |
| 9 | 12,5 | 49092 | 49292 |
| 9 | 15 | 49095 | 49295 |
| 11 | 10 | 49110 | 49210 |
| 11 | 12,5 | 49112 | 49212 |
| 11 | 15 | 49115 | 49215 |
| 13 | 10 | 49130 | 49230 |
| 13 | 12,5 | 49132 | 49232 |
| 13 | 15 | 49135 | 49235 |
| 15 | 12,5 | 49152 | 49252 |
| 15 | 15 | 49155 | 49255 |

Units per Box: 5

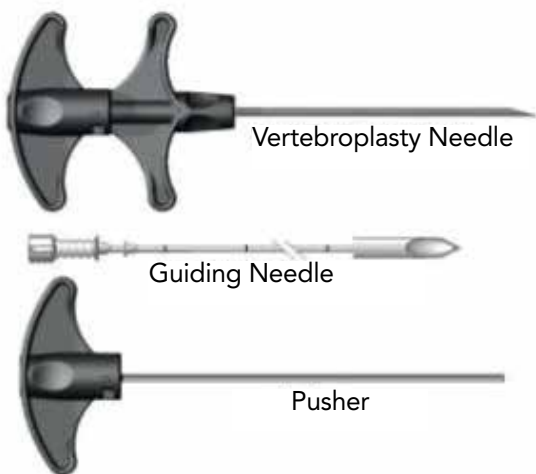
Vertebroplasty Needle – Standard Handle



| Ø Gauge | Length (cm) | Order Code Flute Tip | Order Code Trocar Tip |
|---------|-------------|----------------------|-----------------------|
| 9 | 10 | 49690 | 49890 |
| 9 | 12,5 | 49692 | 49892 |
| 9 | 15 | 49695 | 49895 |
| 11 | 10 | 49610 | 49810 |
| 11 | 12,5 | 49612 | 49812 |
| 11 | 15 | 49615 | 49815 |
| 13 | 10 | 49630 | 49830 |
| 13 | 12,5 | 49632 | 49832 |
| 13 | 15 | 49635 | 49835 |
| 15 | 7 | 49657 | 49857 |
| 15 | 10 | 49650 | 49850 |

Units per Box: 5

Vertebroplasty Needle – Canulated Version



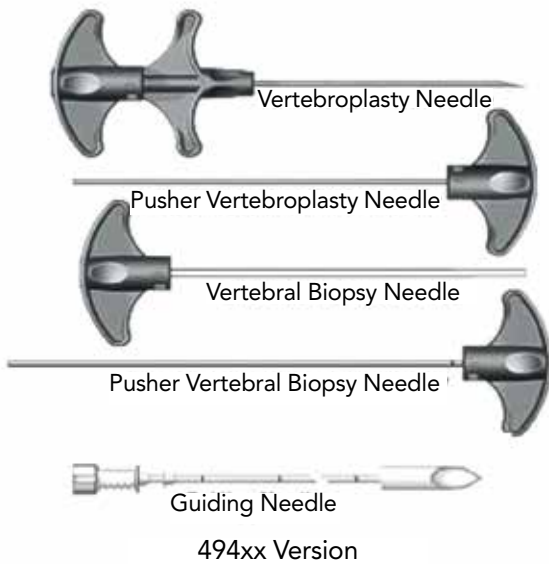
Set content: Vertebroplasty Needle, Pusher, Guiding Needle

| Ø Gauge | Length (cm) | Order Code |
|---------|-------------|------------|
| 9 | 10 | 49390 |
| 9 | 12,5 | 49392 |
| 9 | 15 | 49395 |
| 11 | 10 | 49310 |
| 11 | 12,5 | 49312 |
| 11 | 15 | 49315 |
| 13 | 10 | 49330 |
| 13 | 12,5 | 49332 |
| 13 | 15 | 49335 |
| 15 | 7 | 49357 |
| 15 | 10 | 49350 |

Unit per Box: 1



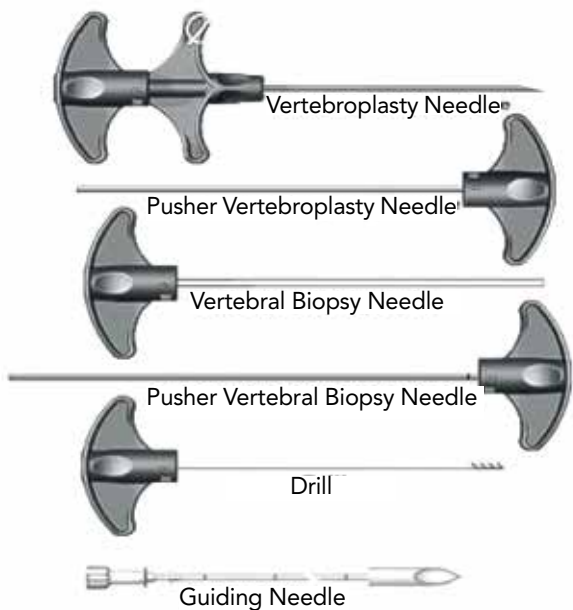
Vertebroplasty and Bone Biopsy Needle Set



| Set Content: Vertebroplasty and Bone Biopsy Needle, Guiding Needle (494xx), Pusher | | | |
|--|-------------|--------------------------------|-------------------------------|
| Ø Gauge | Length (cm) | Order Code Canulated V. Needle | Order Code Standard V. Needle |
| 9 | 10 | 49490 | 49590 |
| 9 | 12,5 | 49492 | 49592 |
| 9 | 15 | 49495 | 49595 |
| 11 | 10 | 49410 | 49510 |
| 11 | 12,5 | 49412 | 49512 |
| 11 | 15 | 49415 | 49515 |
| 13 | 10 | 49430 | 49530 |
| 13 | 12,5 | 49432 | 49532 |
| 13 | 15 | 49435 | 49535 |
| 15 | 7 | 49457 | 49557 |
| 15 | 10 | 49450 | 49550 |

Unit per Box: 1

Vertebroplasty, Bone Biopsy Needle and Drill Set



| Set Content: Vertebroplasty and Bone Biopsy Needle, Guiding Needle, Pusher, Drill | | |
|---|-------------|------------|
| Ø Gauge | Length (cm) | Order Code |
| 9 | 10 | 49790 |
| 9 | 12,5 | 49792 |
| 9 | 15 | 49795 |
| 11 | 10 | 49710 |
| 11 | 12,5 | 49712 |
| 11 | 15 | 49715 |
| 13 | 10 | 49730 |
| 13 | 12,5 | 49732 |
| 13 | 15 | 49735 |
| 15 | 7 | 49757 |
| 15 | 10 | 49750 |

Unit per Box: 1

Adria's commitment to the effective and safe treatment of spinal disorders is further enhanced with this new family of products designed specifically for Vertebroplasty procedures.

This unique group of products offers clinicians choices from a single Vertebroplasty Needle to a full set containing any required instrument to perform a wide range of procedures in one Vertebroplasty session. All items in the range benefit from a different choice of ergonomically designed handle for maximum comfort and control.

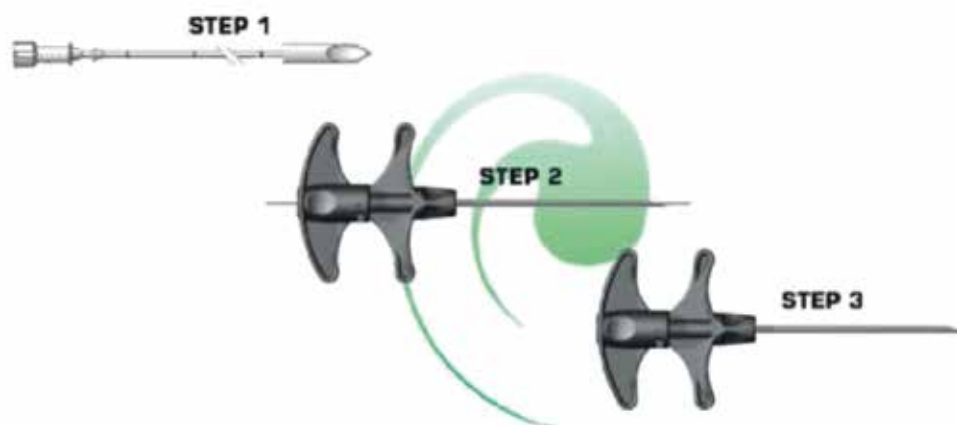
Additional components such as a bone biopsy trocar, drill and cement pusher make possible to perform additional procedures prior to and following the injection of bone cement.

The method of introduction of the Vertebroplasty needle is unique. It utilizes a 20g guiding needle with removable hub.

This guiding needle is used to locate the target area, act as an injection needle for local anaesthetic, and when the hub is removed, provide a pathway for the introduction of the Vertebroplasty needle.

The Vertebroplasty needle is either supplied with an inner stylet that is hollow, allowing it to pass smoothly over the guiding needle. Once placed in position, and with the guiding needle and hollow stylet removed, the Vertebroplasty needle acts as the pathway for all the other components in the set(s).

Vertebroplasty Guided Needle Sets Concept



Distributed from:



Adria srl - via Modena n. 46
40017 San Giovanni in Persiceto – Italy
Ph +39 0376 559772 – web: adriamedical.com